



ECELLAR185

Ageing Wine Cellar
Prestige
Freestanding



GENERAL INFORMATION

Number of bottles : 185
Number of zones : 1
Adjustable temperature range : 5-20°C
Noise level : 38dB
Energy class : G
Climate class : N (16-32)
Vinotag compatible : Yes
Wifi connection : yes
Made in : France

Product description

" INNOVATION GOLDEN PRIZE 2022"

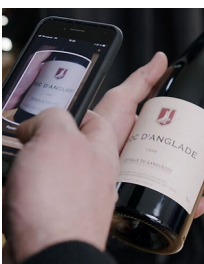
Unique on the wine cellar market, the ECELLAR is equipped with intelligent shelves capable of autonomously detecting the bottles added and removed from the cellar. Connected to the VINOTAG application, they communicate in real time to maintain an exact register of your wines, which can be consulted and personalized on your smartphone or tablet. The bottles are recognized and registered; their exact locations are indicated; their peak dates and stock level tracked.

AGEING CELLAR COMMITMENTS

A real aging cellar, the ECELLAR reproduces the storage conditions of a natural cellar to accompany your wines to their peak: temperature to the nearest degree; controlled hygrometry; Light protection; Filtration and aeration system; Anti-vibration system.

MADE IN FRANCE

Made by wine experts La Sommelière in Sarthe, the ECELLAR was born from French know-how. From design to production, it favors an eco-responsible approach by opting for Made in France and short cycles.



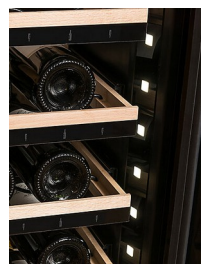
CONNECTED CELLAR

Thanks to a wifi connection access to real time wine inventory



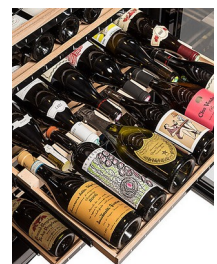
MADE IN France

Combine cutting-edge technology and meet the highest quality standards.



SIDE LED LIGHT

Improves visibility of your wine selection with interior side LED lighting (top to bottom of the cellar)



MULTI FORMAT SHELF

Store all your wine type in the same shelf (Burgundy , Champagne, Riesling)

ECELLAR185

EAN-13 - 3541362011213

Capacity and Temperature

- **Number of bottles: 185**

- **Adjustable temperature: 5-20°C**
 - Upper zone : 14-20°C
 - Middle zone : 10-14°C
 - Lower zone : 5-10°C

Door

Door color : Black
Door glass color : Transparent
Number of glass layers : 3
Anti-UV : Yes
Tempered glass : Yes
Lock : Yes
Reversible door : No
Handle type : Pulling bar

Security

Alarm : Temperature, Wifi
Winter system : Yes

Logistic

Net dimensions (WxDxH): 72.0 x 68.5 x 204.5
Gross dimensions (WxDxH): 76.5 x 78.0 x 219.3
Net weight (kg) : 151.0
Gross weight (kg) : 168.0

Technical Data

Energy class : G
Annual energy (KWh/a) : 224
Climate class : N (16-32)
Noise level : 38dB / C
Energy Efficiency Index : 188 %
Power input : 140.00 W
Voltage : 220-240 V
Length of power cable : 180 cm
Plug Type : E type
Type of gas : R600a
Gas charge : 48 g
Type of compressor : Inverter
Main cooling system : Air moving system
Charcoal filter : 1
Anti-vibration system : Yes
Adjustable feet : 2 / 0.5 cm
Wheels : yes

Light

Light source : LED
Light color(s) : Cold White
Dimmable light : no
Light switch : yes
Permanent light option : Yes

Qty per 20' : 21
Qty per 40' : 0
Qty per 40 HC : 45
Customs code : 8418501990

ECELLAR185

EAN-13 - 3541362011213



Accessories

- 14 shelves, wire with natural wood front, sliding, rails
- 1 charcoal filter, (FCA08)

Compatible accessories references : PIERREDELAVE, BOITEPOURPIERRES, FCA08

Built-in information

Installation warning : This unit is intended for free standing installation only. It must never be built under or built in