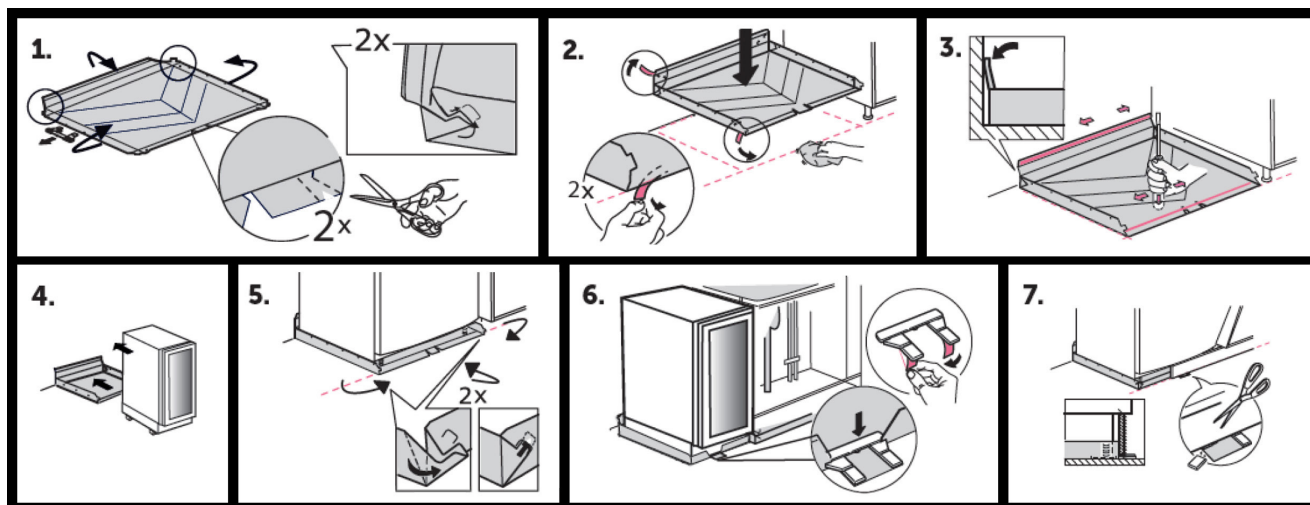


# Assembly instructions drip tray

Drip tray for built-in and integrated wine cabinets.



1. Fold up the edges at the back and sides. Cut according to the markings. Fold in and lock the corner tabs in the groove on the hem. Mark out the wine cooler's location in relation to the cabinet's.
2. Mark out the location of the drip tray in relation to the wine cabinets placement, and wipe the floor clean and dry. Remove the protective liners (2 pcs) on the double-sided tapes.
3. Press the double-sided tapes against the floor and against the wall. Use the back of a screwdriver or similar to secure the tape properly.
4. Lift the wine cabinet into place.
5. Fold up the front edge of the drip tray and fold in and lock the corner flap in the groove on the edge.

**Steps 6 and 7 are only needed if the system is to be open. In the case of a closed system, you can skip step 6 and 7**

6. Remove the protective liners (2 pcs) on the double-sided tapes of the outlet. Press down on the outlet to make sure the edge is seated in the grooves on the outlet.
7. Cut off the excess parts of the outlet in the front to fit the kitchen plinth.

## Product

Temptech - Drip tray 15 cm  
Temptech - Drip tray 30 cm  
Temptech - Drip tray 40 cm  
Temptech - Drip tray 60 cm

## Article number

DRIPTRAY15  
DRIPTRAY30  
DRIPTRAY40  
DRIPTRAY60

## Size (WxHxD)

146 x 40 x 465 mm  
296 x 40 x 465 mm  
396 x 40 x 465 mm  
596 x 40 x 465 mm

## TEMPTECH AS

Borgeskogen 26, 3160 Stokke, Norway  
Org nr. 987 255 765

# TEMPTECH

Discover the best of your wine